

Total Control
of the oral environment.

isolite[®]



isolite[®]SYSTEMS
Better Isolation = Better Dentistry[®]

 **optident**[™]

international development centre
valley drive, ilkley, west yorkshire, ls29 8al

T: +44 (0) 1943 60 50 50

www.optident.co.uk

Proven, Reliable, Award-winning.

Isolite[®] dental isolation is in use at leading dental practices, dental schools and military and public health facilities throughout the USA.

Isolite[®] has received significant industry recognition for its contribution to the advancement of dentistry including being named one of the "50 Greatest Game-Changers in Dentistry," winning eight consecutive Dentaltown Magazine "Townie Choice Awards," and receiving the DrBicuspid.com Dental Excellence Award for Best New Instrument.

Isolite[®] dental isolation technology has been favourably reviewed by leading independent evaluators.



- Isolation
- Suction
- Light
- Retraction
- Moisture
- Humidity
- Contamination
- Chair time
- Safety



'Isolite helps me change my patients perception of dentistry...

...jaw fatigue and the sensation of their mouths filling up with water are now things of the past. From a clinician's perspective, Isolite offers outstanding access to tricky posterior teeth, helps control the tongue, provides better illumination and offers a beautifully dry field. It saves a huge amount of time with the elimination of patients' repeated spitting throughout the procedure, meaning we can work much more efficiently. And what's more, it frees my dental assistants for vast portions of every procedure.

I'd consider myself an early-adopter so I've "invested" in my fair share of gadgets over the years. Sometimes that's been money burned, but Isolite is one definite exception. I swear by it.'

*Sahir Zak Kara BDS MJDF RCS(Eng)
General Dental Practitioner, EnVisage-Emsworth*

General Dentistry

- Fillings • Bonding
- Extractions • Air Abrasion • Sealants
- Laser • Sedation • Emergency Care

Restorative

- Crowns • Bridges
- Inlays/Onlays • Veneers •
- Cementation • Bonding • Digital Impressions • CAD/CAM

Hygiene

- Ultrasonic Scaling
- Air Polishing • SRP • Sealants
- Periodontal Laser Therapy

Specialties

- Paediatric
- Special Needs • Periodontics
- Orthodontics



isolite SYSTEMS

Better Isolation = Better Dentistry®

Total Control
of the oral
environment.

Easier for you.

Comfortable for patients.

The Isolite Difference:

Compared to traditional forms of isolation such as the rubber dam or manual suction and retraction, Isolite Systems award-winning dental isolation technology offers significant advantages. Isolite dental isolation keeps the working field as dry as a rubber dam, but is easier, faster, safer and comfortable for the patient.

Every mouth. **Every procedure.**



Isolite Systems provides a full suite of morphologically and anatomically correct mouthpieces designed to fit the spectrum of patients, giving you easy, effective isolation throughout the oral cavity for every procedure, while improving patient management, safety and comfort.

The brilliance is in the mouthpiece!

The design of the Isolite Mouthpiece is the heart of our award-winning dental isolation systems.



isolite[®] SYSTEMS

Better Isolation = Better Dentistry[®]

Isolite System controls:

- Humidity
- Moisture
- The tongue
- Safety
- Vision
- Patient Comfort

Appropriate dental isolation is vital to the success of almost all dental procedures because it minimises contamination, thereby contributing to clinical success.

Now for the first time, using Isolite we can achieve **TOTAL CONTROL OF THE ORAL ENVIRONMENT**, making everyday procedures easier, safer and more predictable.

The system aids in dental procedures by improving patient management and giving dental professionals unprecedented control of the oral environment: keeping the patients mouth open, improving visibility, controlling suction and oral humidity, and minimising sources of contamination.

Is there a single dental procedure that would not benefit from a moisture and contamination-free field, as well as improved visibility?

Isolite and Isodry dental isolation systems give you **TOTAL CONTROL OF THE ORAL ENVIRONMENT**: keeping the patients mouth open, tongue and cheek retracted. The Isolite systems improve visibility and access and provide control of moisture and oral humidity - significantly reducing sources of contamination.

Morphologically correct, Isolite Mouthpieces are the key to the effectiveness of our award-winning dental isolation systems. Soft, comfortable Isolite Mouthpieces come in a full range of sizes so you have easy, effective isolation for every patient, of every size, for every procedure.

Reliable isolation is now as quick and easy as selecting the correct size Isolite Mouthpiece for the patient. Isolite Mouthpieces isolate two quadrants at a time, control moisture and humidity throughout the oral cavity, while improving patient management, safety and comfort.

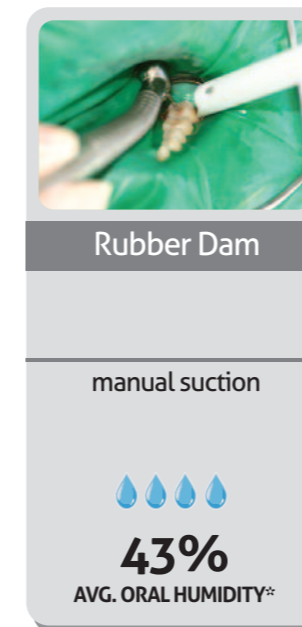
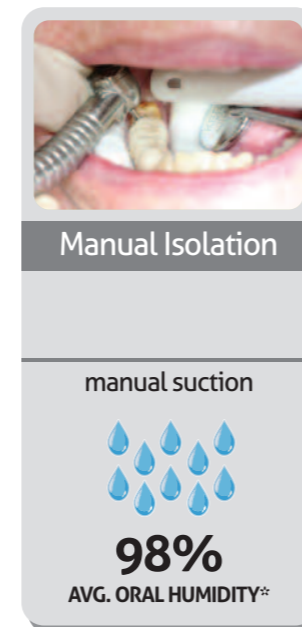
Safe, predictable, time-saving multiple procedures

- 5 sizes of disposable mouthpiece, to fit every mouth
- Protects patients airway and retracts the tongue
- Built-in suction to control saliva contamination and humidity
- Helps protect staff from exposure to aerosols and splatter
- 5 levels of illumination for a clear view every time
- Excellent patient acceptance: easy to place and comfortable to wear
- Treat both arches, unlike rubber dam
- Excellent alternative to rubber dam
- Frees assistant to do the myriad of other duties
- Latex and silicone free

WITHOUT ISOLATION



WITH ISOLITE[®]



**A Study of Humidity and Its Effect on Bond Strength by Michael J. Melkers, DDS, FAGD.

Our premier dental isolation system

Our premier dental isolation system provides two channels of continuous hands-free vacuum suction and brilliant intra oral illumination.

The strong, ultra lightweight Isolite Control Head is constructed of titanium, weighs only 68 grams, and features first-of-its-kind LED technology. Finger-tip lighting control allows the clinician to select from five light-intensity settings, including a "CURE-SAFE" mode or light sensitive materials.

The LED light source is rated for 5000+ hours. Dual vacuum controls allow you to focus suction in either the upper or lower quadrant, allowing you to better control moisture and oral humidity.

The Isolite integrated vacuum Power Hose measures 1.8 metres long, is made of silicone, and connects easily to most standard high-volume ports in the operator.

The Isolite power adapter has an input of 100 – 240 volts; 50-60 Hz and plugs into a standard electrical outlet. One-year warranty.

State-of-the-art dental isolation for your practice



isolite

Use Isolite in multiple surgeries by simply installing an extra power vacuum hose to each required chair.



Not as bright just as brilliant

The Isodry dental isolation system provides two channels of continuous hands-free vacuum suction.

The strong, ultra lightweight Isodry Control Head is constructed of titanium and weighs only 68 grams.

Dual vacuum simultaneously allows you to focus suction in either the upper or lower quadrant, giving you better control of moisture and oral humidity. The Isodry vacuum hose measures 1.8 metres long, is made of silicone, and connects easily to most standard high volume suction units. One-year warranty.

Isolite Systems dental isolation devices install easily in most dental surgeries.



The Safety Advantage

Isolite Systems deliver three significant safety advantages for the patient.

1) Tongue and cheek retraction and protection: The Isolite Mouthpiece shields the tongue and cheek, providing an added measure of protection from injury using burs or other dental instruments.

2) Airway protection: The airway is protected, preventing inadvertent foreign body aspiration.

3) Visible Airway: The clear mouthpiece provides visibility to the airway for better patient monitoring.

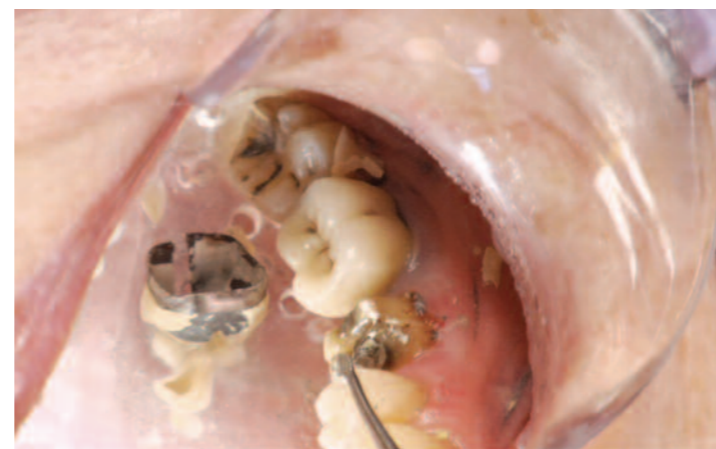


PROTECTED



UNPROTECTED

Isolite Airway Protection



Inadvertent loose crown is blocked from entering patient's airway by the Isolite Mouthpiece.

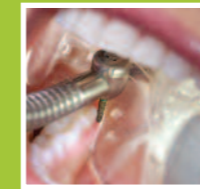
GENERAL DENTISTRY

- Fillings
- Bonding
- Extractions
- Air Abrasion
- Sealants
- Laser
- Sedation
- Emergency Care



RESTORATIVE

- Crowns
- Bridges
- Inlays/Onlays
- Veneers
- Cementation
- Bonding
- Digital Impressions
- CAD/CAM



HYGIENE

- Ultrasonic Scaling
- Air Polishing
- SRP
- Sealants
- Periodontal Laser Therapy



SPECIALTIES

- Paediatric
- Special Needs
- Periodontics
- Orthodontics



New!

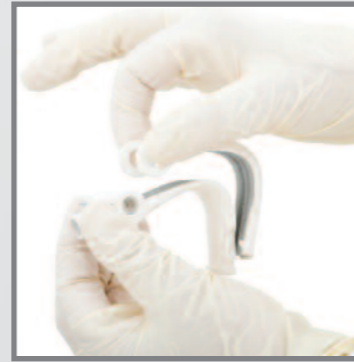
isovac™

The Isovac™ dental isolation adapter is perfect for furnishing multiple surgery practices with easy-to-use oral control. Like the Isolite® and Isodry® you can take advantage of all the benefits of our award winning mouthpieces.

The strong, ultra lightweight Control Head is constructed of an easy-to-clean autoclavable polymer. Dual vacuum controls enable you to focus continuous hands-free vacuum suction in both upper or lower quadrants, allowing you to better control moisture and oral humidity.

The adapter quickly attaches to an available saliva ejector. The Isovac™ is the perfect solution for practices to add an affordable and versatile alternative for oral control.

1 Year Warranty



Easy to clean, completely disassembles for access to all areas



Simple to install, attaches directly to the saliva ejector

Whats included with isovac™



Isovac™ dental isolation adapters



Accessory kit

'The combination of Isolite's soft mouth

prop, excellent tongue and cheek retraction, suction and the variable illumination- right where I needed it, gives me the perfect working environment. Enabling complete control allowing accurate preparation and bonding of my porcelain restorations'.

Dr Julian Caplan, Aviva Dentistry Ltd, St Albans

'Since getting the Isolite system I can

honestly say that it has become an essential piece of equipment in my practice.

I use the system multiple times on a daily basis for adhesive cementations, tooth coloured fillings and Cerec dentistry.

I originally bought the Isolite solely based on my American counterparts raving about how it had improved their Cerec work. The Isolite makes it easier to take amazingly crisp accurate digital images and the cheek and tongue retraction make working easier and much faster.

I was surprised to find that many of my patients found the Isolite more comfortable than rubber dam and the ease of set up means it is a system you will use. I would recommend the Isolite to any dentist or hygienist and even your dental nurses will love it!'

Riten Patel BDS, Mulberry Dental, Walton-on-Thames

What the dentists

say

'We use Isolite during implant surgeries and

major restorative treatment. It provides extra illumination in the mouth and protects the tongue, throat and buccal mucosa from accidental damage. It helps to stabilise the mandible and specifically with longer treatment sessions provides support for the jaw.

It's very useful when treating patients under sedation.'

Dr Simon Milbauer, Your Perfect Smile, Aviemore

'I have always been very impressed with the product range from Optident.

Isolite in particular is an absolute winner. Being able to manage complex cases, that would not be suitable for application of rubber dam and having adequate moisture control, plus a mouth rest, illumination and saliva management is fantastic. I have used Isolite for procedures where the patient would otherwise have required conscious sedation due to inaccessibility of molar teeth. As a result of using LA in conjunction with Isolite, I managed to restore a carious lower third molar, previously impossible to access, whilst the patient remained calm and comfortable throughout. Excellent product and good product support.'

*Dr. Ian A Lane BDS (Hons)
Queensway Dental Practice and Specialist Referral Centre, Teesside*