

Composite Wetting Resin

Description and Indications:

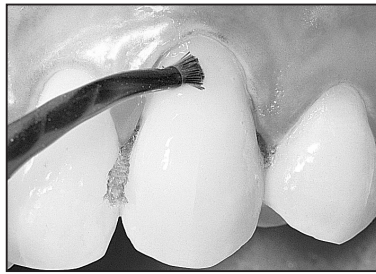
Composite Wetting Resin is a 45% filled, radiopaque light cured wetting resin. It may be used during the placement of composite if the composite has become dry during incremental layering, or if the oxygen inhibition layer has been removed or disturbed. Composite Wetting Resin helps to improve the glide of the instrument during sculpting and contouring.

Procedure:

1. Remove luer lock caps and attach the Inspiral® Brush tip to syringe.
2. Apply a thin layer to cured composite increment as needed. Air or vacuum thin (vacuum excess resin using 18-20 gauge Endo-Eze® tip on Luer Vacuum adapter).
3. If using Composite Wetting Resin for instrument glide, apply a small quantity to instrument or surface of soft composite.

Precautions:

1. Any resin can be sensitizing to skin or can cause allergic reaction if individual is already sensitized. Therefore, wash area of skin exposed to resin completely to remove the material. If dermatitis, rash or any other allergic reaction is observed, see a physician.
2. When dispensing intraorally, never force syringe plungers. If there is excess resistance to flow, replace tip with a new one and verify flow before proceeding.
3. Use only recommended tips with each specific material. Tips are disposable.
4. We recommend using Ultradent® Syringe Covers sealed with the Ultradent® Impulse Sealer for a protective barrier to prevent cross-contamination.



EN Apply a thin layer to cured composite increment as needed. Air or vacuum thin (vacuum excess resin using 18-20 gauge Endo-Eze® tip on Luer Vacuum adapter).



If using Composite Wetting Resin for instrument glide, apply a small quantity to instrument or surface of soft composite.

DE-Composite Wetting Resin
FR-Agent de mouillage pour composite
NL-Composietbevestigingshars
IT-Resina per bagnare i compositi
ES-Resina Hidratante de Composite
PT-Resina Humificadora para Compósito
SV-Vättningsresin för komposit
DA-Komposit Befugtningresin
FI-Yhdistelmämuovin kostutusresiini
EL-Σύνθετη ρητίνη για διαρή



Inspiral® Brush Tip



EN- Recycle
DE- Recyclen
FR- Recycler
NL- Recyclen
IT- Riciclare
ES- Recicle
PT- Reciclar
SV- Återvinna
DA- Genbrug
FI- Kierrätkäytös
EL- Ανακυκλώσει το

General Precautions:

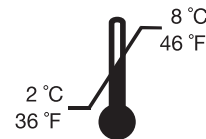
1. For Professional use only.
2. Review instructions, precautions, and SDS before beginning treatment. Use only as directed.
3. Keep products out of heat/sunlight.
4. Avoid skin exposure to resins.
5. Isolate strong chemicals to area of treatment.
6. Confirm that patient has no known allergies to treatment materials.
7. Test flow of materials from syringe and tip before using intraorally.
8. Never force syringe plungers.
9. Use Ultradent® Syringe Covers and/or clean and disinfect syringes between patient.
10. Use standard curing lights with all light polymerized/activated materials.



EN-Batch code
DE- Chargennummer
FR- Numéro de lot
NL- Batchcode
IT- Numero di lotto
ES- Código de partida
PT- Código do lote
SV- Satskod
DA- Batchkode
FI- Eräkkoodi
EL- Κωδικός παρτίδας



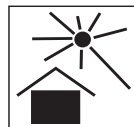
EN - For Professional use only.
DE - Nur für professionelle Anwendungen.
FR - Destiné à une utilisation professionnelle uniquement.
NL - Uitsluitend voor professioneel gebruik.
IT - Solo per uso professionale.
ES - Sólo para uso profesional.
PT - Destina-se apenas à utilização profissional.
SV - Endast för yrkesmässigt bruk.
DA - Må kun anvendes af tandlægepersonale.
FI - Vain ammatikäyttöön.
EL - Μόνο για επαγγελματική χρήση.



EN- Refrigerate
DE- Kühlen
FR- Réfrigérer
NL- In de koelkast bewaren
IT- Conservare in frigorifero
ES- Refrigerar
PT- Refrigerar
SV- Kyl ned
DA- Opbevares i køleskab
FI- Jäähdytettävä.
EL- Το διατηρείται στο ψυγείο



EN- Irritant
DE- Irritierend
FR- Irritant
NL- Irriterend
IT- Irritante
ES- Irritante
PT- Irritante
SV- Irriterande
DA- Lokalirriterende
FI- Ärsyttävä
EL- Ερεθιστικό



EN- Keep products out of heat/sunlight.
DE- Produkt nicht in die Sonne legen oder Hitze aussetzen.
FR- Gardez les produits loin de la chaleur/de la lumière.
NL- Zorg dat het product niet aan hitte/zonlicht wordt blootgesteld.
IT- Tenere i prodotti lontano dalle fonti di calore e dalla luce del sole.
ES- Mantenga estos productos alejados del calor y de la luz solar.
PT- Manter fora do calor/luz solar.
SV- Produkterna ska hållas borta från hetta/solljus.
DA- Produkterne skal holdes væk fra varme/sollys.
FI- Suojaa tuote kuumudelta ja auringonvalolta.
EL- Διατηρήστε τα προϊόντα μακριά από θερμότητα/ηλιοφως.



EN- Use by date
DE- Verfallsdatum
FR- Date de péremption
NL- Uiterste gebruiksdatum
IT- Utilizzare entro
ES- Utilizar antes de
PT- Validade
SV- Använd före
DA- Anvendes inden
FI- Viimeinen käyttöajankohta
NO- Bruk før dato
RU- Использовать до



EN- See Instructions For Use
DE- Siehe Gebrauchsinfo
FR- Voir le Mode d'emploi
NL- Lees de gebruiksaanwijzing
IT- Leggere attentamente le istruzioni d'uso
ES- Síga las instrucciones
PT- Ver instruções para uso
SV- Se bruksanvisning före användning
DA- Se brugsanvisning
FI- Katso käyttöohjeita
EL- Δείτε τις οδηγίες ρήσεως

Composite Wetting Resin

Manufactured by:
Ultradent Products Inc
505 West 10200 South
South Jordan, Utah 84095 USA



UP Dental GmbH,
Am Westhoyer Berg 30,
51149 Cologne Germany

For SDS information please visit:
www.ultradent.com



EN- Do not re-use to avoid cross contamination
DE- Nicht wiederholt verwenden, um Kreuzkontamination zu verhindern.
FR- Ne pas réutiliser pour éviter la contamination croisée.
NL- Niet opnieuw gebruiken om kruisbesmetting te vermijden.
IT- Per evitare la contaminazione crociata non riutilizzare.
ES- No lo reutilice, así evitará la contaminación cruzada.
PT- Não reutilizar para evitar a contaminação cruzada.
SV- För undvikande av korskontamination får produkten inte teravändas.
DA- Må ikke genbruges for at undgå krydskontaminering.
FI- Älä käytä uudelleen ristikontaminaation välttämiseksi.
EL- Μην τοεπαναχρησιμοποιείτε για να αποφύγετε τη διασταυρωτική μόλυνση



EN- Catalog number
DE- Katalognummer
FR- Numéro de catalogue
NL- Catalogusnummer
IT- Numero di catalogo
ES- Número de catálogo
PT- Número de catálogo
SV- Katalognummer
DA- Katalognummer
FI- Luettelonumero
EL- Αριθμός καταλόγου

ULTRADENT PRODUCTS, INC.

© Copyright 2011 Ultradent Products, Inc. All Rights Reserved. 23887.6 060314

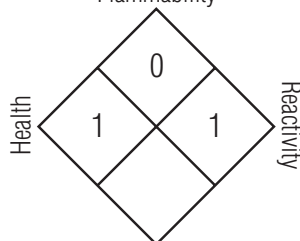
For immediate reorder and/or complete descriptions of Ultradent's product line, refer to Ultradent's catalog or call Toll Free 1-800-552-5512. Outside U.S. call (801) 572-4200 or visit www.ultradent.com.

Ultradent syringes have an expiration date stamped on the side of the syringe consisting of one letter and three numbers. The letter is a lot number used for manufacturing purposes and the three numbers are the expiration date. The first two numbers are the month, and the third number is the last number of the year.

U.S. federal law restricts this device to sale by or on the order of a dentist.

Composite Wetting Resin

Flammability



HAZARD RATING
4 = Severe
3 = Serious
2 = Moderate
1 = Slight
0 = Minimal