

Luting silica-based ceramics with **PermaFlo® DC** (feldspathic porcelain, leucite-reinforced ceramic, lithium disilicate, and lithium silicate)

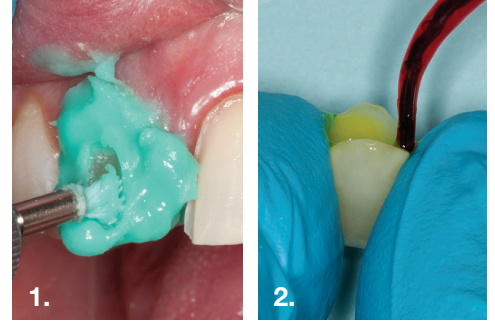


1. Clean preparation, rinse, and dry

We recommend Consepsis® Scrub and STARbrush® to clean, disinfect, and remove residual temporary cement.

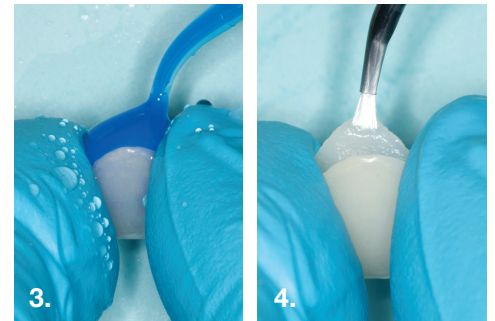
2. Apply Ultradent® Porcelain Etch to prosthesis

Etch for 90 seconds, rinse, and dry. Lithium disilicate requires the same etching times as porcelain when using 9% hydrofluoric acid.*



3. Apply phosphoric acid (Ultra-Etch®) to prosthesis

Clean for 5 seconds to remove porcelain salts and debris formed by hydrofluoric acid etching. Rinse and air dry. This step is recommended for glass-ceramic restorations but NOT for zirconia restorations, as phosphoric acid reduces bond strengths to zirconia.



4. Apply a puddle coat of silane to prosthesis

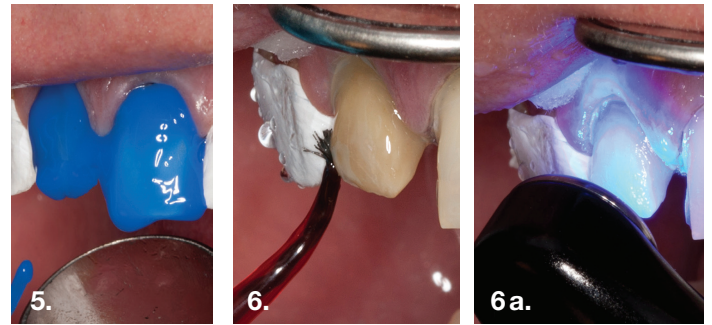
Let sit for 1 minute, dry, and set prosthesis aside. Do not rinse.

5. Apply Ultra-Etch to preparation

Etch for 20 seconds. Rinse thoroughly and leave damp.

6. Apply a puddle coat of Peak® Universal Bond to preparation

Using the Inspiral® Brush tip, gently agitate the surface for 10 seconds. Thin/dry for 10 seconds using full air pressure. Preparation should appear shiny. Light cure with VALO® for 10 seconds.

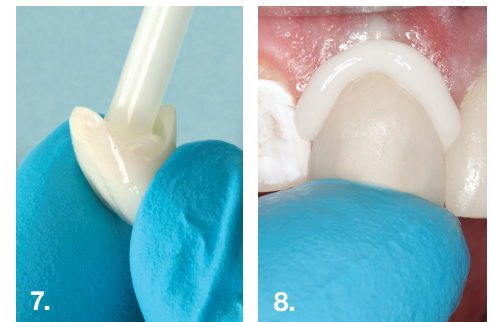


7. Express PermaFlo DC onto the inside bonding surface of the prosthesis.

The Intraoral tip (not shown) may be attached to the mixing tip for additional precision.

8. Carefully position and seat the restoration.

Working time is approximately 2.5 minutes. Set time is 5-8 minutes.

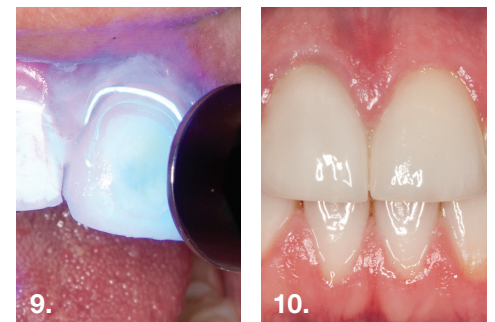


9. Optional: Light Cure

Apply DeOx around margins to prevent oxygen-inhibited layer, and light cure for 10 seconds with VALO.

10. Remove excess cement

Use a carbide finishing bur or fine diamond bur to remove cement. Touch up with polishers, finishing strips, and floss. Final restoration is complete.



NOTE: For cementing veneer restorations, Ultradent recommends PermaShade™ LC, a light-cured luting resin that features low shade shift and is used exclusively for veneers.

*Data on file, Ultradent R&D