

A close-up photograph of a young child's mouth during a dental procedure. A white dental device, the Isolite, is positioned in the mouth, emitting a bright light. The child is looking upwards and to the right.

HOW ISOLITE CAN HELP YOUR PEDIATRIC PRACTICE

BENEFITS TO YOUR PRACTICE



**INCREASE PRODUCTIVITY.
INCREASE PROFITABILITY PER PROCEDURE.**

Isolite enables the doctor and their team to work faster and more efficiently by helping manage young patients.



**IMPROVE PROCEDURE EFFICIENCY.
IMPROVE YOUR PRACTICE'S REPUTATION.**

Specifically with performing sealants on pediatric patients, a single clinician can treat a patient faster, without the need of an additional assistant.



**FEWER SEALANT FAILURES.
HIGHER COLLECTION RATES.**

Isolite eliminates fluids, humidity and debris from the work area improving efficacy and clinical outcome of sealants, fillings, and crowns, providing consistent clinical outcomes and a positive patient experience.



**FEWER NO-SHOWS.
INCREASE PROFITS WITH COST SAVINGS.**

Patients are more comfortable and feel safer with Isolite, improving their experience in your practice. Chair time is reduced, increasing the probability of your patients coming back for their next appointment.

BENEFITS TO YOUR PATIENTS



SEALANTS

It's possible for one patient's entire mouth to be sealed in less than 8 minutes with one hygienist, because Isolite lets hygienists etch two quadrants simultaneously. Etch is rinsed and evacuated quickly without having your patient taste the etch or stop and spit. Cure multiple sealants at the same time without tongue or saliva contamination. There's no need for an additional assistant to keep the mouth dry or hold evacuation tools during treatment.



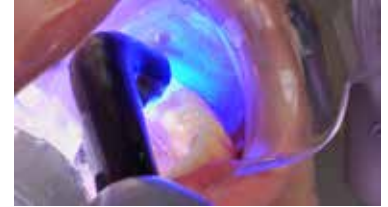
BEHAVIOR MANAGEMENT

Pediatric practices report that young children and special needs patients benefit from the integrated bite block that allows them to rest and keep their mouth open without the help of an assistant. The Mouthpiece, which is as soft as gingival tissue, is not only comfortable for the patients, but it also prevents the tongue from getting in the way or being cut inadvertently.



PULPOTOMIES AND CROWNS

Pulpotomy and crown placement is faster and easier when you don't have to use a rubber dam. No palatal injection is necessary to place an Isolite Mouthpiece unlike when using a rubber dam. Because the throat is protected, there's no need to worry about dropping materials down a patient's throat.



ORTHODONTIC BONDING

Isolite helps control moisture in the oral cavity which provides a drier field for better bonding for fixed appliance and bracket placement. Clinicians report a lower failure of bonding due to contamination and moisture when using Isolite.

GET STARTED WITH ISOLITE
TODAY AND SAVE!

isolite SYSTEMS

isolitesystems.com

866-584-0469

