

Meant to Last: Restorative Essentials

A reliable adhesive, a powerful curing light, and a quality composite are the most essential products for creating a long-lasting restoration. The adhesive system influences the strength and longevity of the bond to the tooth structure, while the composite affects the marginal integrity, wear resistance, and esthetics. But without adequate polymerization, even the best products may fail prematurely. High quality materials are essential for enabling a clinician to create restorations that surpass the expectation of lasting performance.



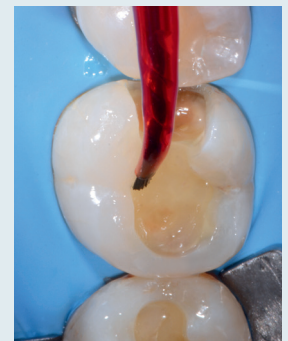
1. Preoperative view of failed composite restoration.



2. Preparation after removal of composite and decay.



3. 20-second application of Ultra-Etch® etchant on dentin and enamel; rinse and leave damp.



4. Application of Peak® Universal Bond; brush onto enamel and scrub into dentin for 10–15 seconds. Thin/dry approximately 10 seconds.



5. Cure time of 10 seconds with VALO® curing light on Standard Power mode.



6. Placement of Mosaic® composite with Enamel Neutral inside sectional matrix.



7. Placement and adaptation of Mosaic composite. First layer A2, second layer Enamel Neutral. Characterization stain added with tinted flowable resin.



8. Removal of isolation and final polish.



“Peak Universal Bond adhesive, VALO curing light, and Mosaic composite are an outstanding set of products that allow any dentist to get predictable, esthetic, and high-performing direct composite restorations.”
 – Prof. Lorenzo Breschi, University of Bologna

