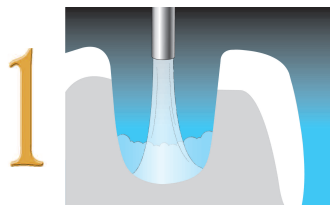
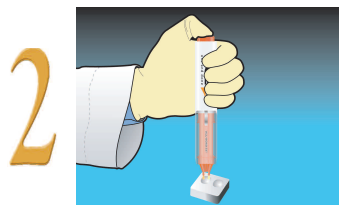


Direct Restoration Placement Using ACE™ ALL-BOND SE®

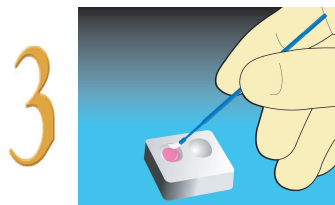
For best results, etch uncut enamel with UNI-ETCH® w/BAC (phosphoric acid) for 15 seconds and rinse thoroughly.



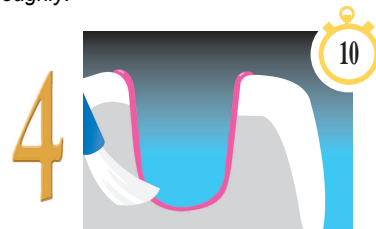
1 Completely dry the preparation.



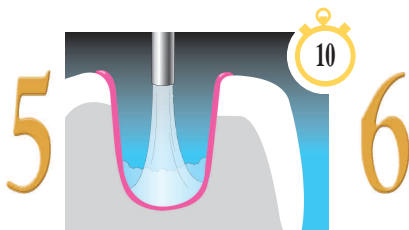
2 Dispense ALL-BOND SE from the ACE Dispenser into a mixing well.



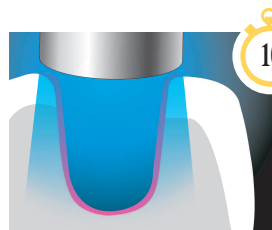
3 Using a brush, mix until uniformly pink.



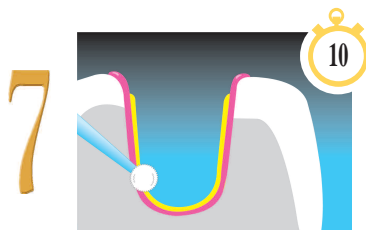
4 Apply 1-2 coats of ALL-BOND SE to the dry tooth preparation & agitate each coat for 5-10 sec.



5 Gently air dry starting from **5cm for 5 sec.**, until there is no visible movement of the material. Then thoroughly dry at the **cavosurface for 5 sec.** Surface should be shiny.



6 Light cure for 10 sec.



7 **Optional:** Apply a coat of ALL-BOND SE LINER in a thin layer less than 1mm and light cure for 10 sec.

Continue with placement of restorative material.

INTC-033
Rev. 5/09

ACE™
ALL-BOND SE®