

UNI-ETCH® w/BAC and ETCH-37™ w/BAC

Phosphoric Acid Etchants with Benzalkonium Chloride (BAC)



UNI-ETCH w/BAC and ETCH-37 w/BAC are 32% and 37% semi-gel phosphoric acid etchants with BAC (Benzalkonium Chloride). They are ideal for etching tooth structure prior to bonding, and are specifically formulated to be easily applied to larger surface areas and rinse cleanly with no residue. In addition, they are easily manipulated into small areas such as endodontically treated root canals and undercuts. This makes them more versatile than thicker gel etchants for etching all restorative surfaces. Published research proves that BISCO etchants produce higher bond strengths to (wet or dry) dentin¹ and enamel.



- Rinses away cleanly and quickly leaving no residue to interfere with bonding.
- Blue in color for easy visualization and contrast.
- Creates microretentive surface characteristics that are necessary for successful bonding.
- New bulk syringe delivery system available.
- Contains benzalkonium chloride (BAC), an antimicrobial agent. In-vitro research shows it is effective against *Actionomyces viscosus*².



A total-etch technique with ETCH-37 w/BAC.
Dentistry courtesy of Dr. Ross Nash

NOTE: Inclusion of BAC has not been shown to correlate with a reduction in secondary decay in patients. In-vivo clinical studies to evaluate the effects of BAC on oral bacteria or caries have not been performed.

INDICATIONS FOR USE

1. Etching dentin and enamel.
Time: 15 seconds
2. Cleaning agent on dental restorative materials.
Time: 30 seconds

1. Kanca, J.J. "Etchant Composition and Bond Strength to Dentin." Am J Dent 1993;6:162-164.
2. Dr. Daniel Chan, University of Texas Health Science Center at San Antonio Dental School. Residual Effect of 1 and 2% Benzalkonium Chloride Incorporated into an Etchant on the Susceptibility of *Actionomyces viscosus* T14V. 1993

TO ORDER CALL: 800-247-3368 • 847-534-6000



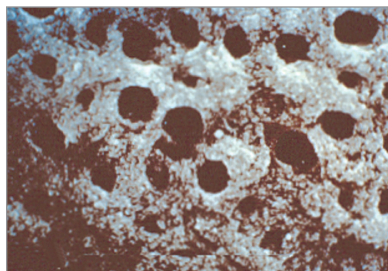
Rx Only

MC-3530ET

BISCO
www.bisco.com

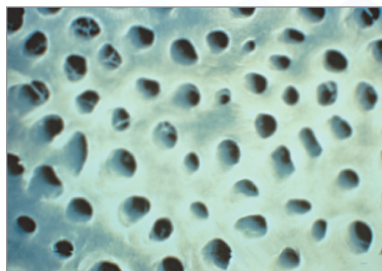
UNI-ETCH® w/BAC and ETCH-37™ w/BAC

Phosphoric Acid Etchants with Benzalkonium Chloride (BAC)



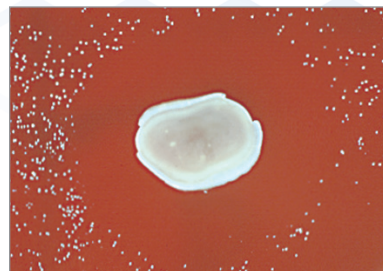
TYPICAL GEL

Note the presence of silica, used as filler, on the etched, rinsed surface. Imperceptible to the naked eye, the remaining debris can impede the flow of primer over the dentin surface and into the dentinal tubules. This can compromise surface wetting and bond strength.



BISCO's SEMI-GEL

BISCO etchants utilize a polymer to create thixotropic properties and enhance handling characteristics. Furthermore, it leaves no residue, rinsing away completely.



ETCHANTS WITH BAC*

In-Vitro research confirms the development of residual bacterial inhibition zones of up to 7mm, when challenged with *Actinomyces viscosus* T14V. This bacterium is implicated in periodontal disease and root caries and has as much significance as *Streptococcus sobrinus* 6715. The standard inoculum will be in broth culture with approximately 108 CFU/ml.²

ORDERING INFORMATION

UNI-ETCH W/BAC (32%)

30ML BULK SYRINGE KIT

1 Syringe (30ml), 30 Disposable Syringes, 30 Disposable Tips, Instructions

E-56620K

4 SYRINGE PACKAGE

4 Syringes (5g ea.), 60 Disposable Syringe Tips, Instructions

E-5502EBM

1 Bulk Bottle (30g), Instructions

E-5637EB

REFILLS

1 Bulk Syringe (30ml), Instructions

E-56621P

EMPTY SYRINGE ACCESSORY PACK

30 Disposable Syringes, 30 Disposable Syringe Tips, Instructions

X-80582P

ETCH-37 W/BAC (37%)

30ML BULK SYRINGE KIT

1 Syringe (30ml), 30 Disposable Syringes, 30 Disposable Tips, Instructions

E-56740K

4 SYRINGE PACKAGE

4 Syringes (5g ea.), 60 Disposable Syringe Tips, Instructions

E-5503EBM

1 Bulk Bottle (30g), Instructions

E-5638EB

REFILLS

1 Bulk Syringe (30ml), Instructions

E-56741P

EMPTY SYRINGE ACCESSORY PACK

30 Disposable Syringes, 30 Disposable Syringe Tips, Instructions

X-80583P

ACCESSORY

125 Light Blue Disposable Tips (25 Gauge)

X-80611N