



# IPR Guide

Creating accurate interproximal spaces for orthodontic procedures, including minor tooth movement, has never been easier. Simply use the FitStrip color-coded diamond-impregnated strips according to the order provided.

Start the interproximal reduction (IPR) process with the serrated FitStrip (Grey) in order to break contact. Next, use the yellow single-sided strip (.08mm) and continue in progression until the necessary space has been attained. **A measurement guide provided by your system of choice should be used before moving to the next step in the progression.**

For the best clinical outcome when an ideal posterior anatomical contour is desired, finish your procedure using the FitStrip locked in the curved position. Preferably, you should base your choice of straight or curved position on the anatomical shape of the tooth you intend to reduce.

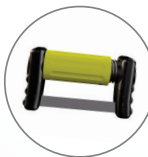
The system may be used on just about any dentition and in concert with any system where exact interproximal spaces may be required (Six Month Smiles™, MTM™, Invisalign™, Clear Correct™, among others).

# IPR Guide



## Step 1

Serrated  
.05 mm



## Step 2

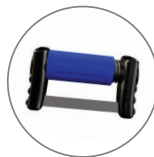
Single-Sided  
.08 mm



## Step 3

Single-Sided  
.10 mm

.10



## Step 4

Single-Sided  
.13 mm



## Step 5

Single-Sided  
.18 mm

.20



## Step 6

Double-Sided  
.21 mm

.25



## Step 7

Double-Sided  
.30 mm

.30

*This guide is provided as a basic starting point for interproximal reduction. Refer to your individual system's Instructions For Use for technical guidance.*

**Garrison**  
Dental Solutions

### Company Headquarters

Toll-Free (US and Canada): 888.437.0032  
T 616.842.2244  
gds@garrisondental.com  
garrisondental.com

### European Office

info@garrisondental.net  
garrisondental.com

Made in Israel.

© 2016 Garrison Dental Solutions, LLC