

Instructions for use

myCustom Rings kit



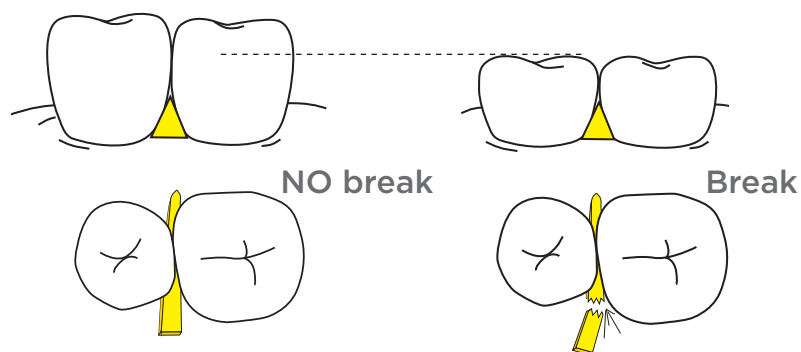
sectional
matrix
systems



Class II restoration using myCustom Rings kit

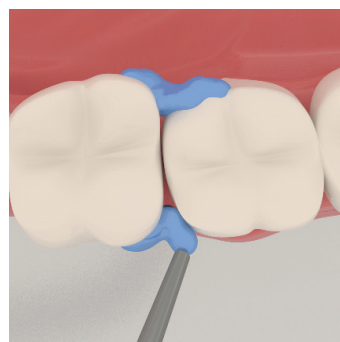
The myCustom Rings technique allows you to easily recreate the pre-existing interproximal anatomy. The ring tines are custom-shaped by taking an impression of the healthy and intact proximal walls using the included light curing composite material, myCustom Resin.

Part 1: Create custom shaped ring tines



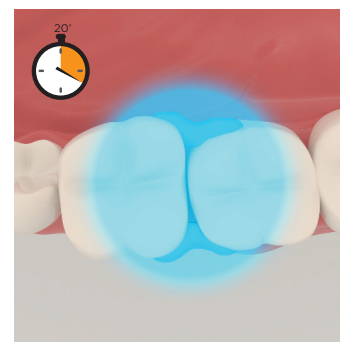
1. Pre-Wedging

Select the appropriate sized wooden wedge and insert it. Depending on the height of the tooth you are restoring, we suggest breaking the wedge as shown in Figure 1



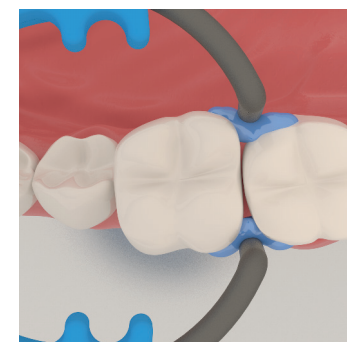
2. Reproduce the proximal anatomy

Place a first layer of myCustom Resin. This layer will accurately reproduce the proximal tooth surface.



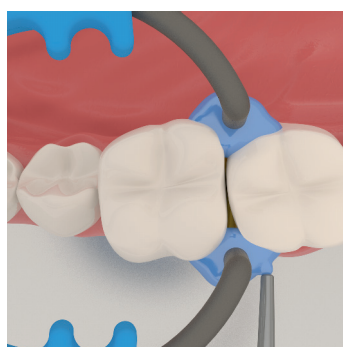
3. Polymerization

Polymerize the first layer of myCustom Resin



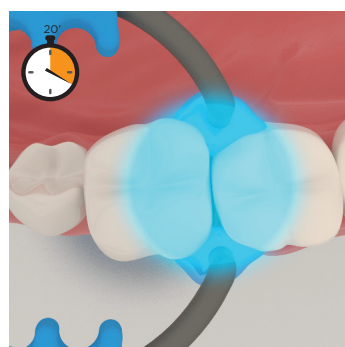
4. Place myRing Classico

Place myRing Classico on the polymerized myCustom Resin.



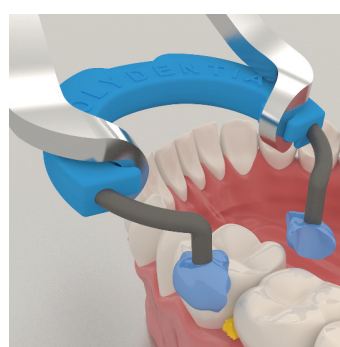
5. Ring stabilization

Add a second layer of myCustom Resin to fix and incorporate myRing Classico.



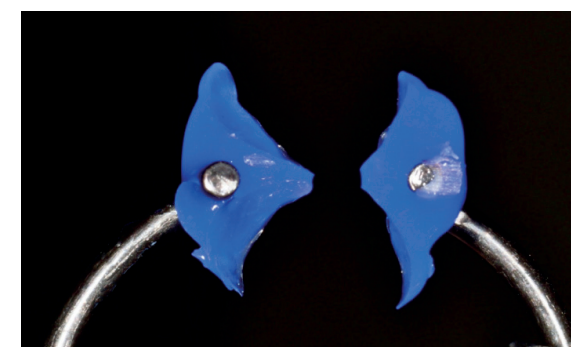
6. Polymerization

Polymerize the final layer of myCustom Resin.



7. myCustom Ring removal

Carefully dislodge myCustom Ring. Remove the wooden wedge and keep it to reuse it during the restoration, refer to Part 2.



Tips & Tricks:

While proceeding with the restoration, to better protect the custom-shaped tines, keep myCustom Ring slightly expanded, engaged in the rubber dam forceps.

Recommendations:

- 1 - Place a rubber dam
- 2 - Read Cleaning, Disinfection and Sterilization Instructions at www.polydentia.com

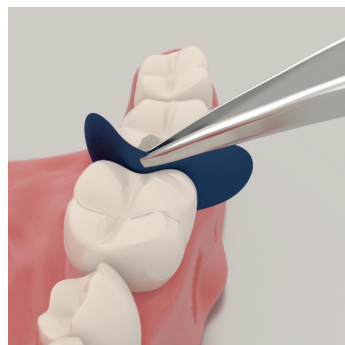
Class II restoration using myCustom Rings kit

Part 2: Proceed with the filling



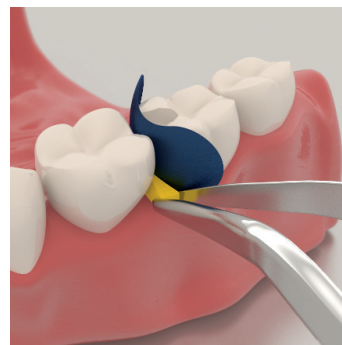
1. Prepare the cavity

Remove the carious lesion and prepare tooth with a conservative Class II preparation. Even if the contact was not totally broken the matrix can be placed.



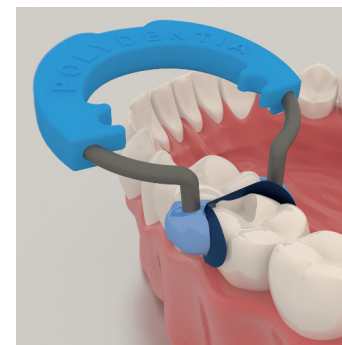
2. Place the matrix

Select an appropriate matrix band according to the tooth morphology and restoration type. Place the contoured sectional matrix with the concave edge towards the occlusal margin using your fingers or with tweezers.



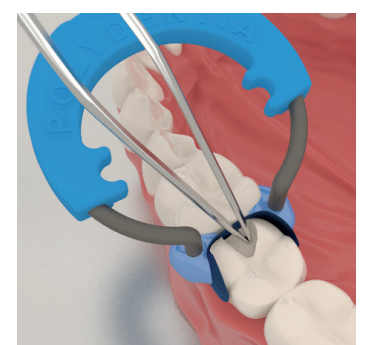
3. Wedging

Place the wooden wedge you used to create the custom shaped ring tines. When needed maintain a finger on the matrix band to avoid dislodging during wedging.



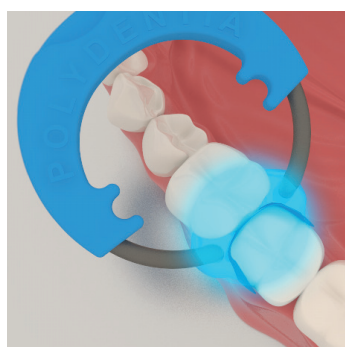
4. Place your myCustom Ring

Expand myCustom Ring using Polydentia's myForceps, or standard rubber dam forceps; place the ring carefully and securely.



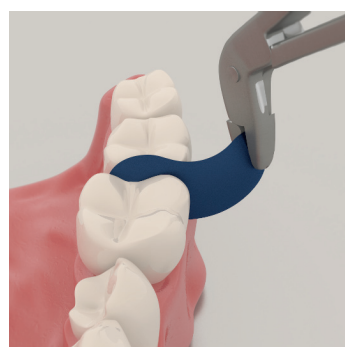
5. Burnish the matrix

For an excellent contact burnish the band against the adjacent tooth using a ball burnisher or tweezer.



6. Restore the cavity

Restore the cavity according to the filling material manufacturer's instructions.



7. Remove the sectional matrix system

Remove your myCustom Ring, the wedge and the matrix. Our suggestion for an easy matrix removal is to use the special Polydentia myQuickmatrix Forceps.



8. Finishing and polishing

With thin burs remove any small excess of material then polish the restoration according to the finishing and polishing instruments manufacturer's recommendations.



Recommendations:

- 1 - Place a rubber dam
- 2 - Read Cleaning, Disinfection and Sterilization Instructions at www.polydentia.com