

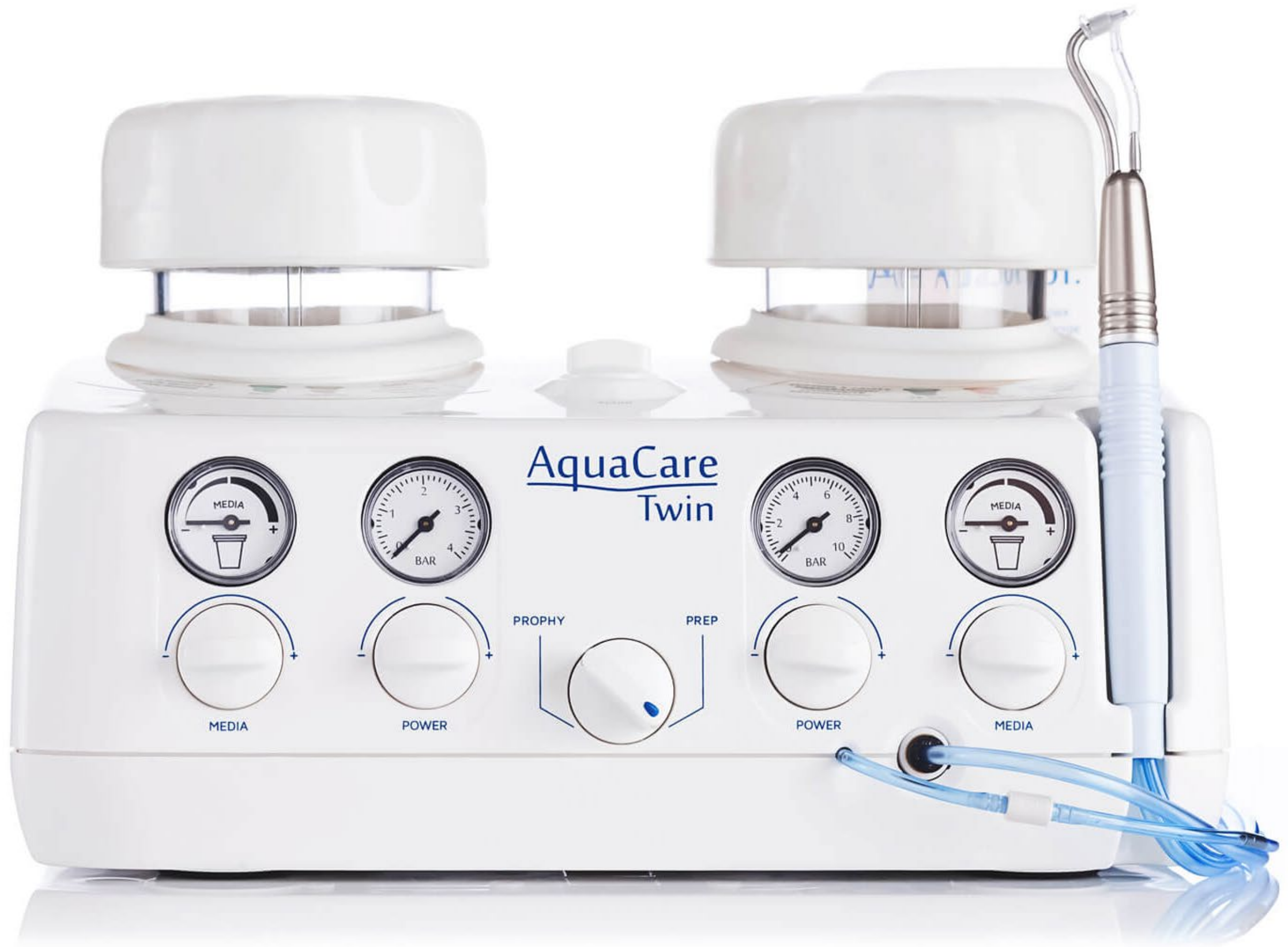
AquaCare

Dentistry's New Norm

"The Difference between just using a device or investing in a Philosophy"

Dimitris Tsananaktsidis

AquaCare

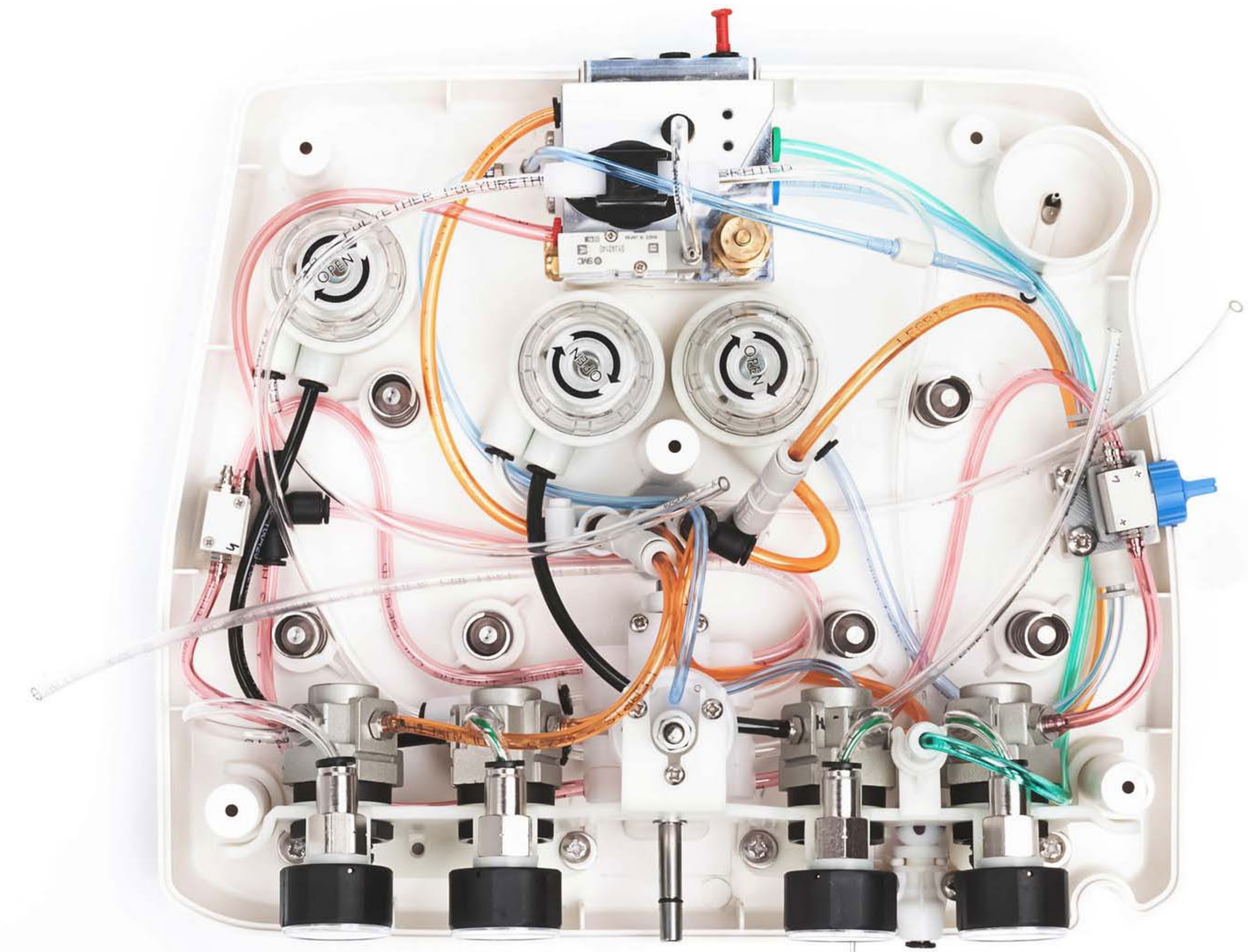


Innovative



Versatile

AquaCare



Unique



Unlimited

AquaCare



"Air abrasion from buccal and lingual to remove all debris. I use an AquaCare". **Lincoln Harris**, restoringexcellence.com.au



Cleaning and conditioning old composites with AquaCare 53 micron by **Jordi Manauta**



"Particle abrasion with 29 micron alumina to remove aprismatic enamel and improve bond strengths prior to no prep direct bonding to close black triangles which were secondary to periodontal disease." **Jason Smithson**

AquaCare

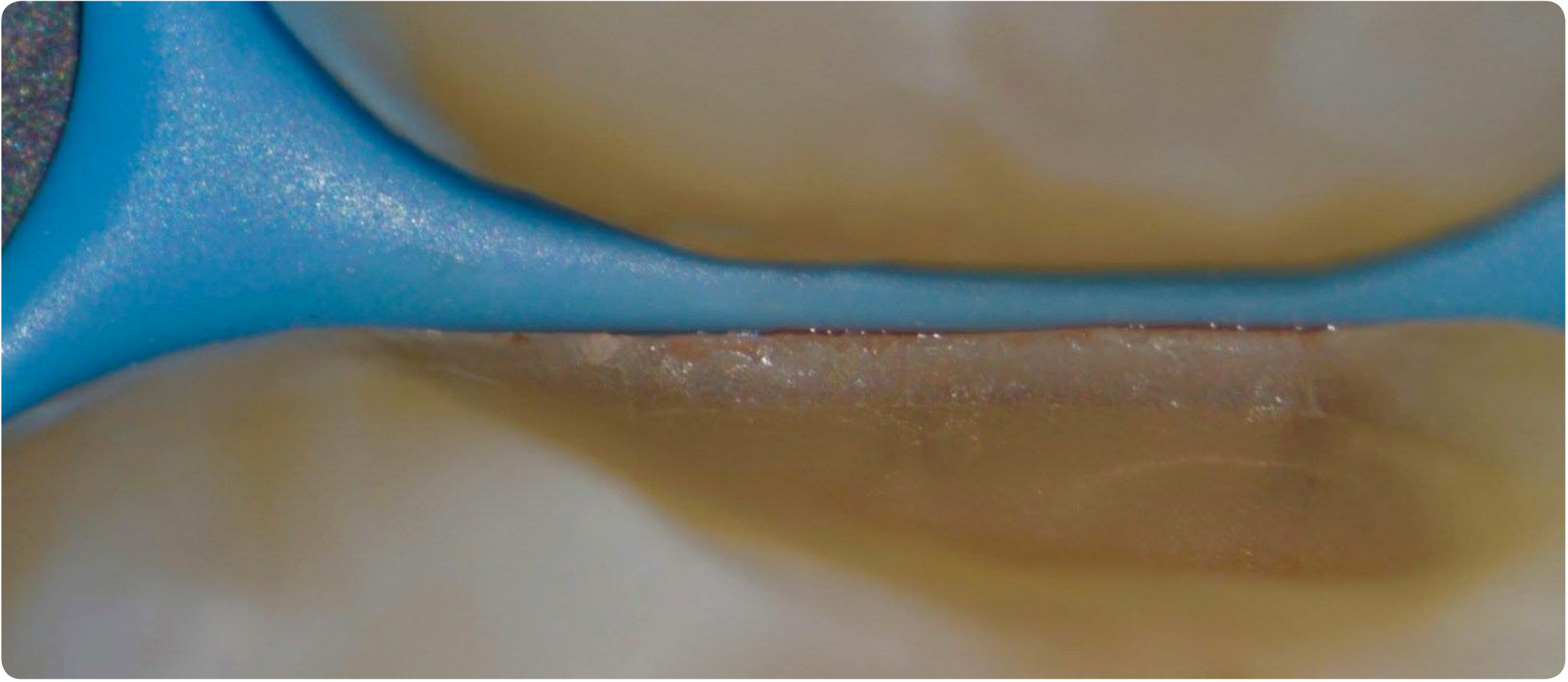


Cleaning with Sylc by Griya Ridha Raharja
Tap here or on image to see the video.



Cleaning with Sodium Bicarbonate
by Peet van der Vyver

AquaCare



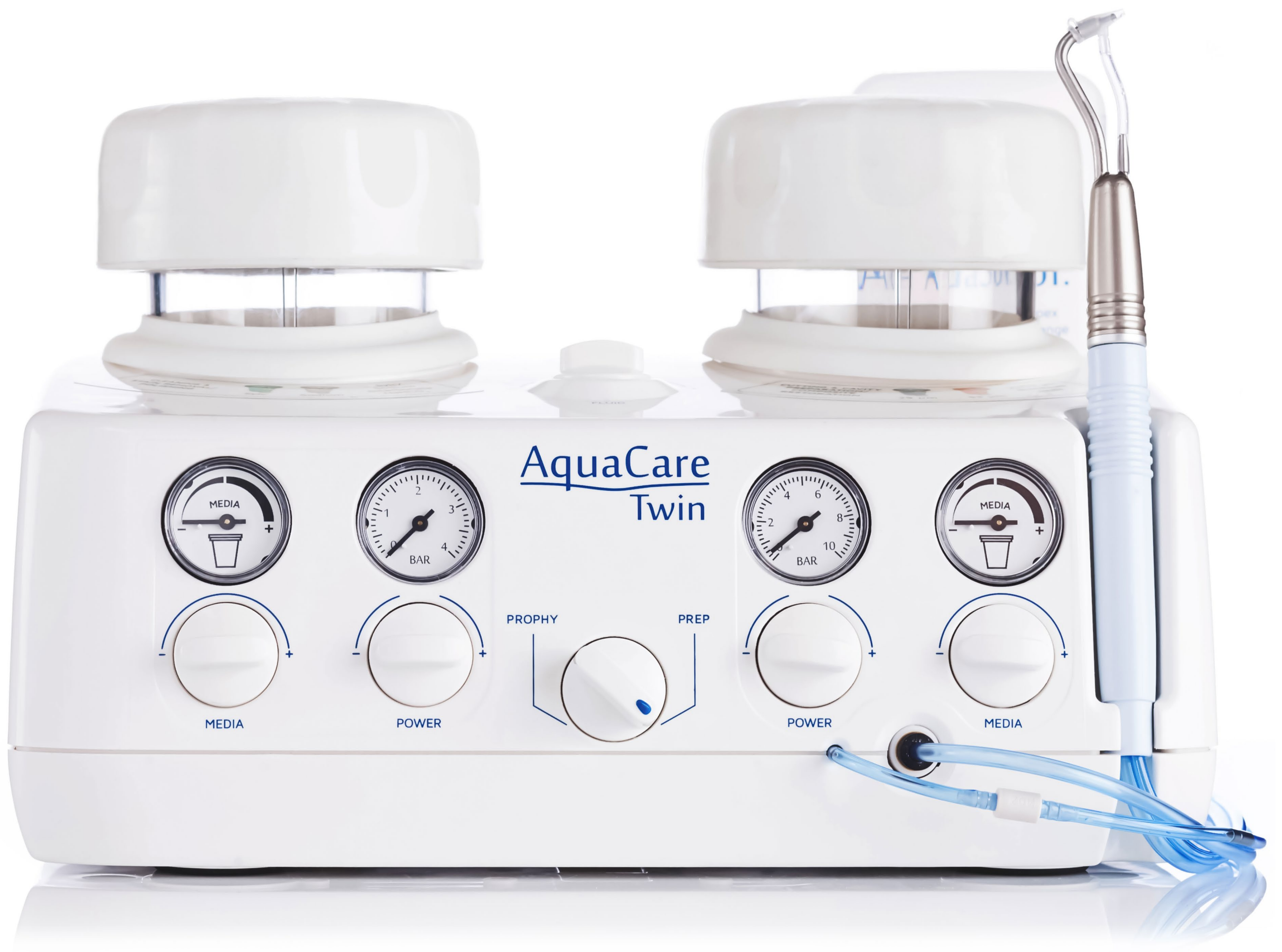
"Always finish on 29 μ m Aluminium Oxide and Sylc". **Thomas Taha**



"Used 53 micron aluminium oxide, then used electrosurgery and isolated by means of Ferrior Clamps and teflon. The image is after sandblasting and before etching." **Pasquale Venuti**



"AquaCare allows me finally to sandblast or prophylaxis inside and outside the mouth, with or without water, with the exact amount of media I want to deliver. I'm in full control now of those important procedures". **Walter Devoto**



AquaCare uses breakthrough technology to deliver a comfortable, quick clean procedure, by using a fine stream of fluid combined with a tiny volume of powder directed at the teeth to be treated.



Contactless Dentistry

Unlike conventional rotary cutting instruments, the AquaCare handpiece is not in direct contact with the tooth structure, removing only the minimum of sound tooth material and eliminating the risk of chipping and stress fractures.



AquaCare

- AquaCare increases bond strength with its texturing of the cavity surface.
- Faster, more efficient cleaning for removing stains from all tooth aspects, even accessibly difficult pits and crevices, whilst also treating sensitivity. Patients love their brilliant smiles.
- Minimal need for anaesthetics combined with the lack of vibration, heat generation and noise leads to reduced patient anxiety. AquaCare is recognised as a practice enhancing product.
- Balanced, slim line fully autoclavable handpiece without bulky attachments.
- Incredibly versatile across a wide variety of restorative dental procedures.
- Convenient, easy to use colour-coded cartridge system makes swapping between types of treatment effortless.

AquaCare

Easy & Flexible



We've designed AquaCare so that it works ideally and allows for the widest range of dental cases.

That's why we invented a cartridge system: they're easy to switch, replace and as more powders become available they are future proof.

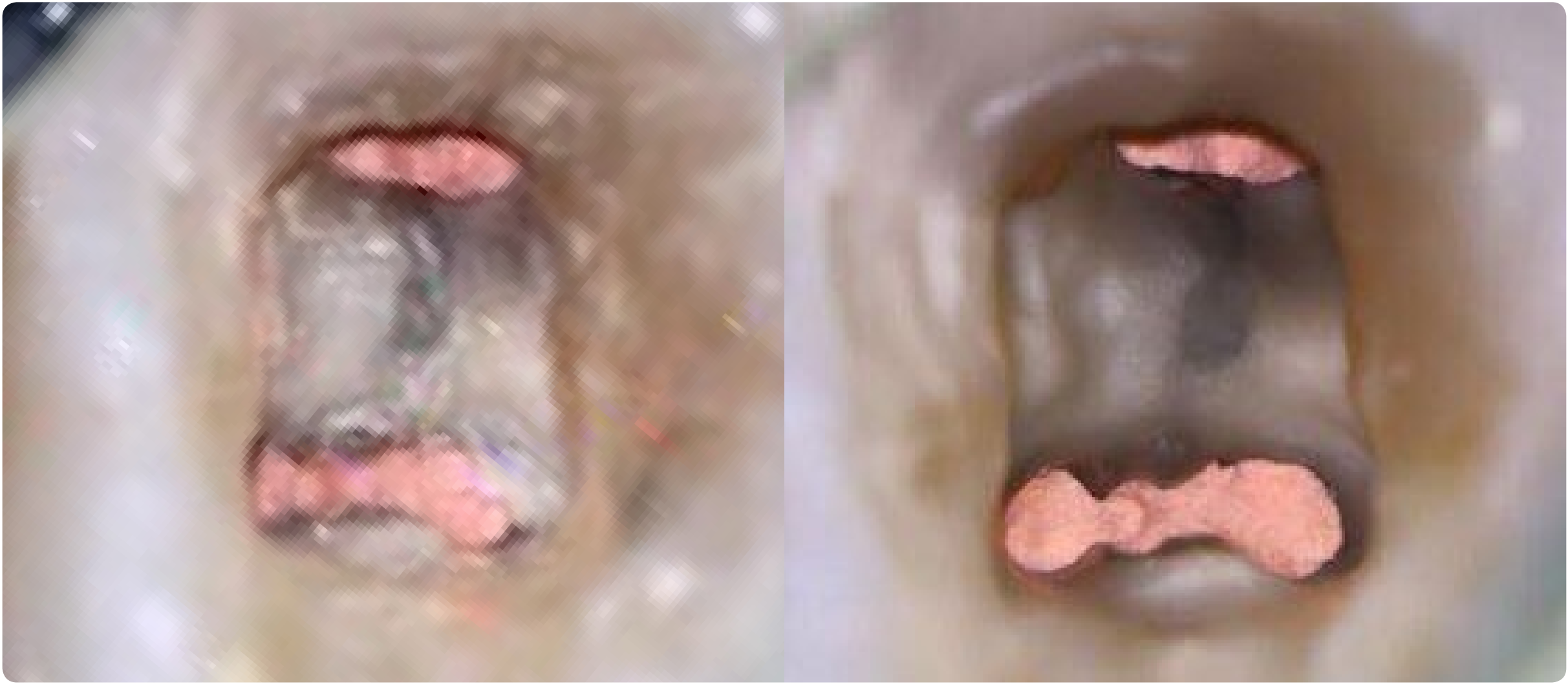
Powders



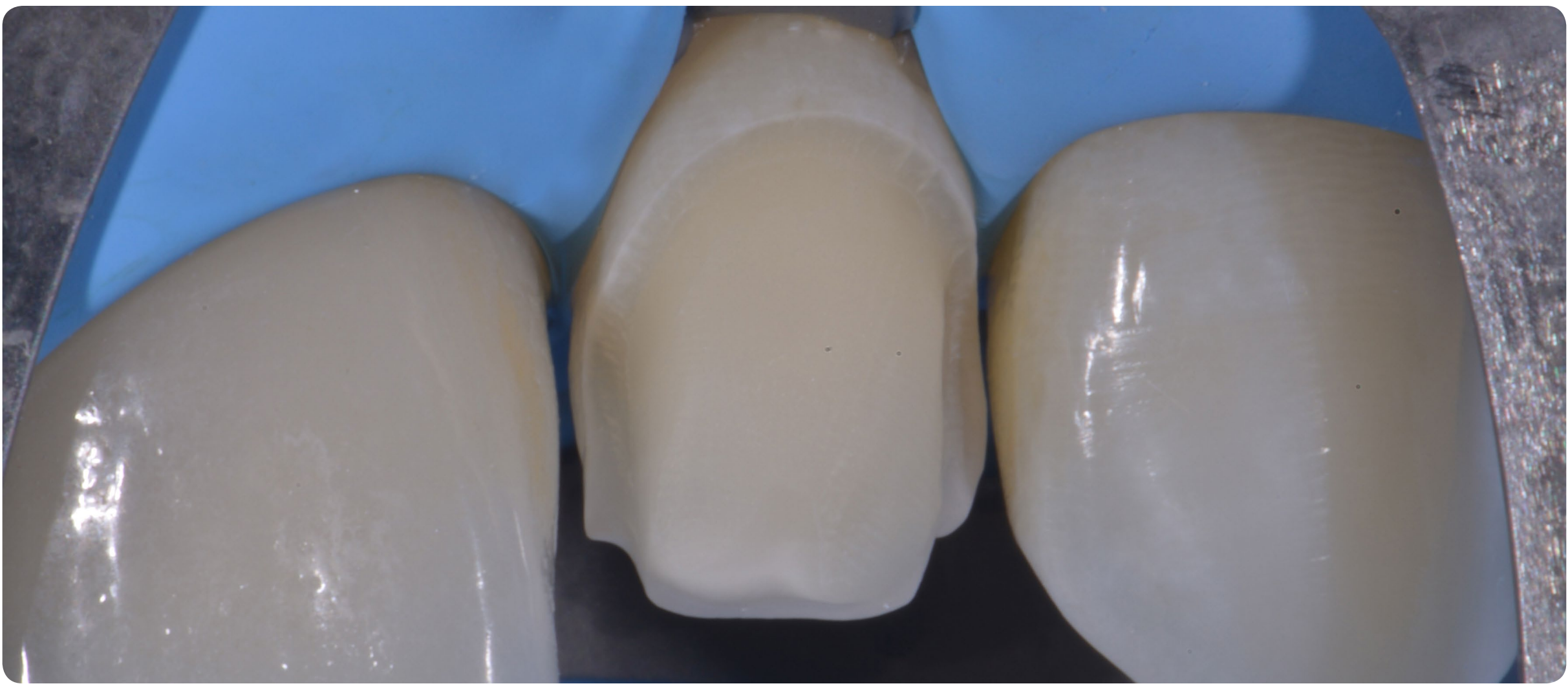
When it comes to powder, we believe you deserve the best quality so that your experience with AquaCare never fails to be other than outstanding.

That's why we are constantly developing our powders, as well as, our partnerships with trusted manufacturers and close collaborators.

AquaCare



Blasting with sodium bicarbonate and a curtain of water allows me to remove obturation cement from the floor of the pulp chamber, isthmuses or other retentive areas. **Freddy Belliard**



Particle abrasion with 53 micron Aluminium Oxide to remove bonding resin used for temporaries, to clean adhesive surfaces and improve bond strengths before cementing four disilicate veneers. **Lorenzo Vanini**



Therapeutic Pre-treatment. **Florin Cofar**

Sylc Powers

Powered by Novamin, Sylc is a calcium sodium phosphosilicate powder, a highly biocompatible material which was originally developed as a bone conductive material. The bioactive glass material reacts with body fluids (saliva) to deposit hydroxycarbonate apatite (HCA), a mineral that is chemically similar to natural tooth mineral.

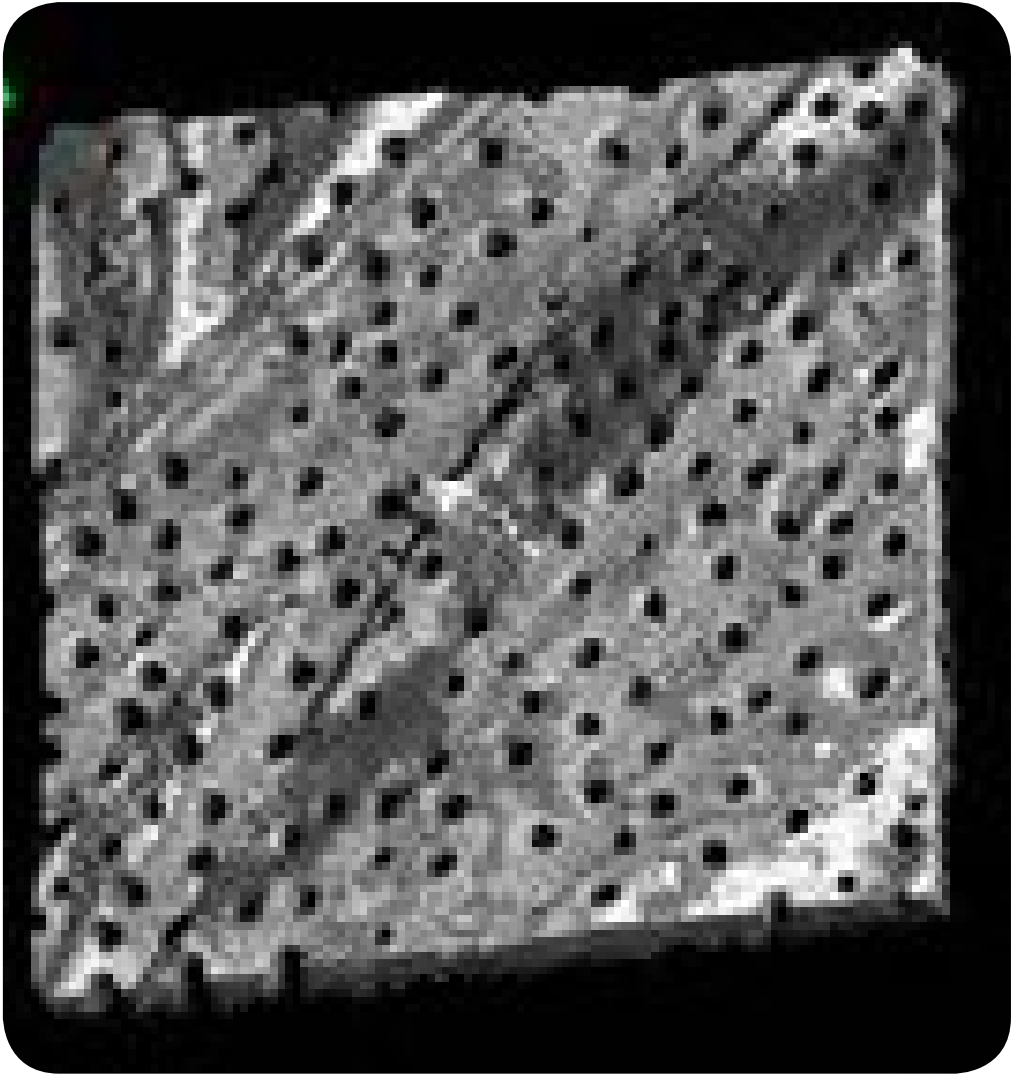
This is one of the reasons why finishing the cavity with Sylc will occlude the dentinal tubules, reduce the water-contamination at the bonding interface with consequent hydrolytic degradation and reduce the risk of post-operative hypersensitivity.



"Always finish on 29 μ m Aluminium Oxide and Sylc". **Thomas Taha**

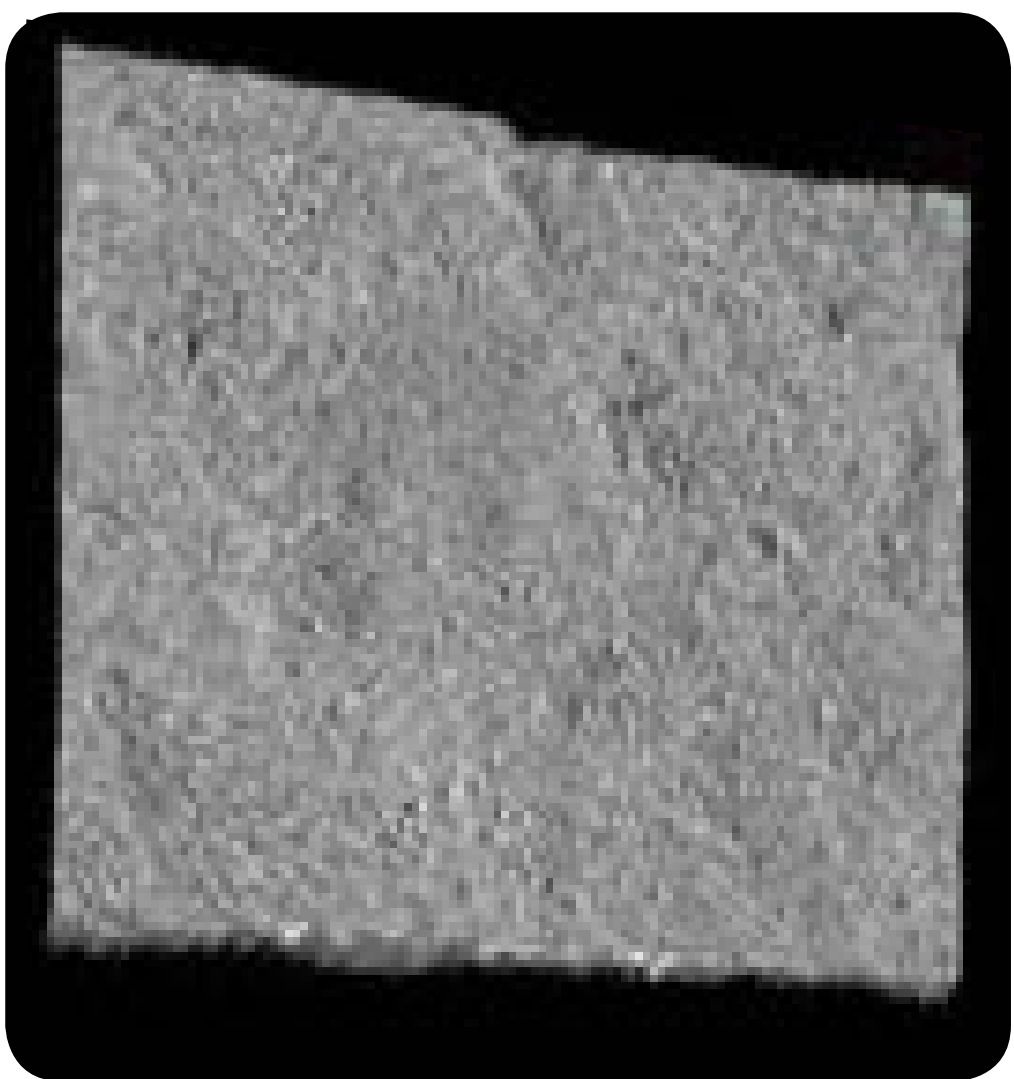
AquaCare

A



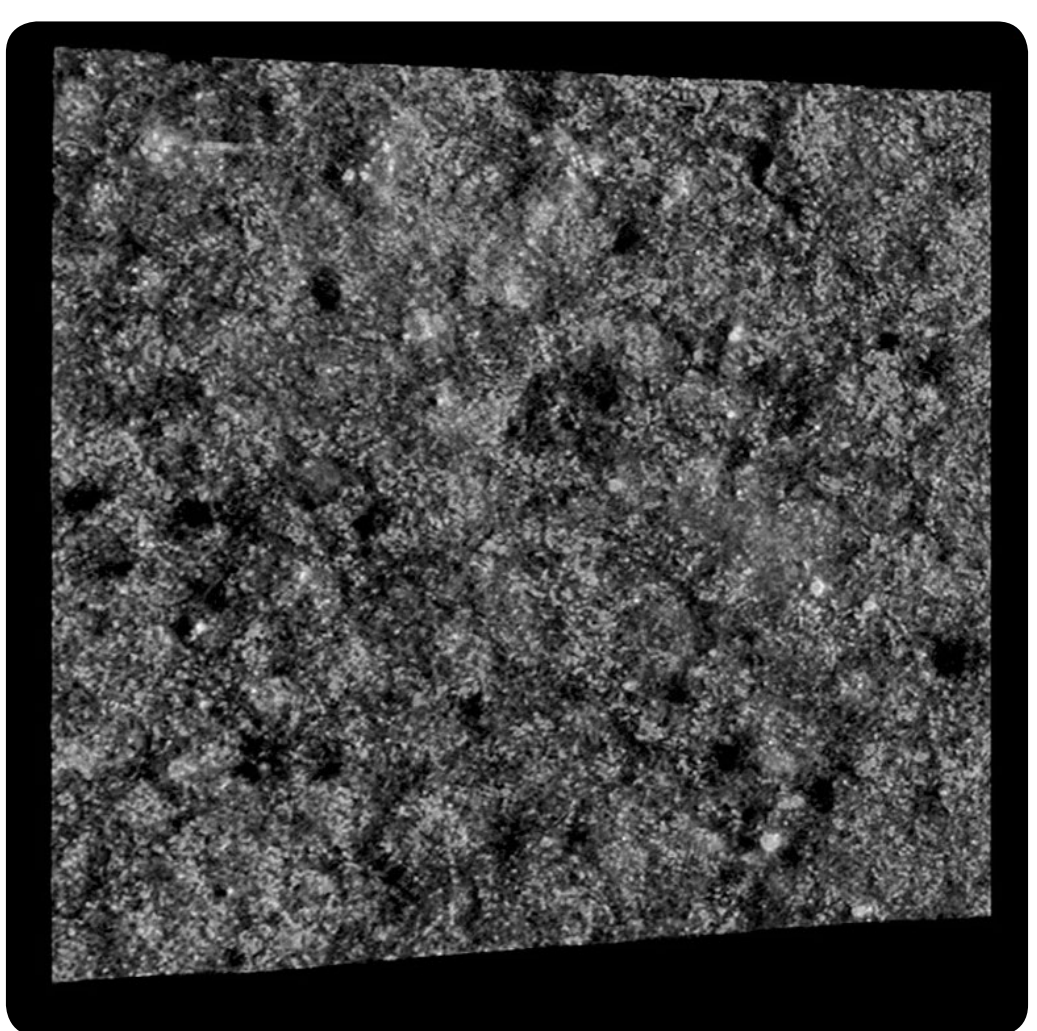
A: Dentine before air-abrasion. Note a smear layer-free surface with many patent dentinal tubules. (Confocal 3D topographic image)

B



B: Dentine treated using AquaCare and Sylc bioglass. Note the presence of a smear layer occluding the dentinal tubules and covering the entire dentine surface. (Confocal 3D topographic image)

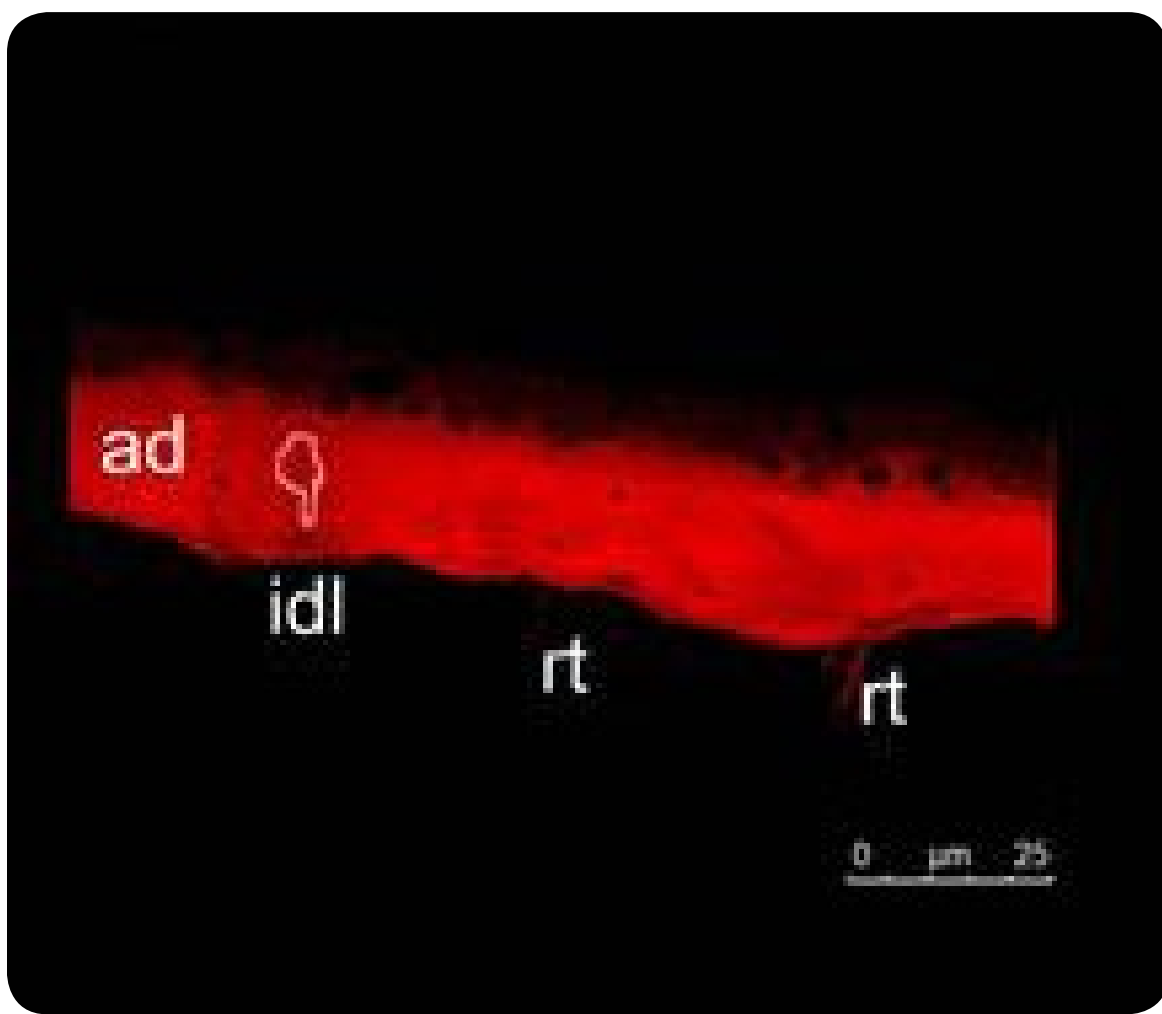
C



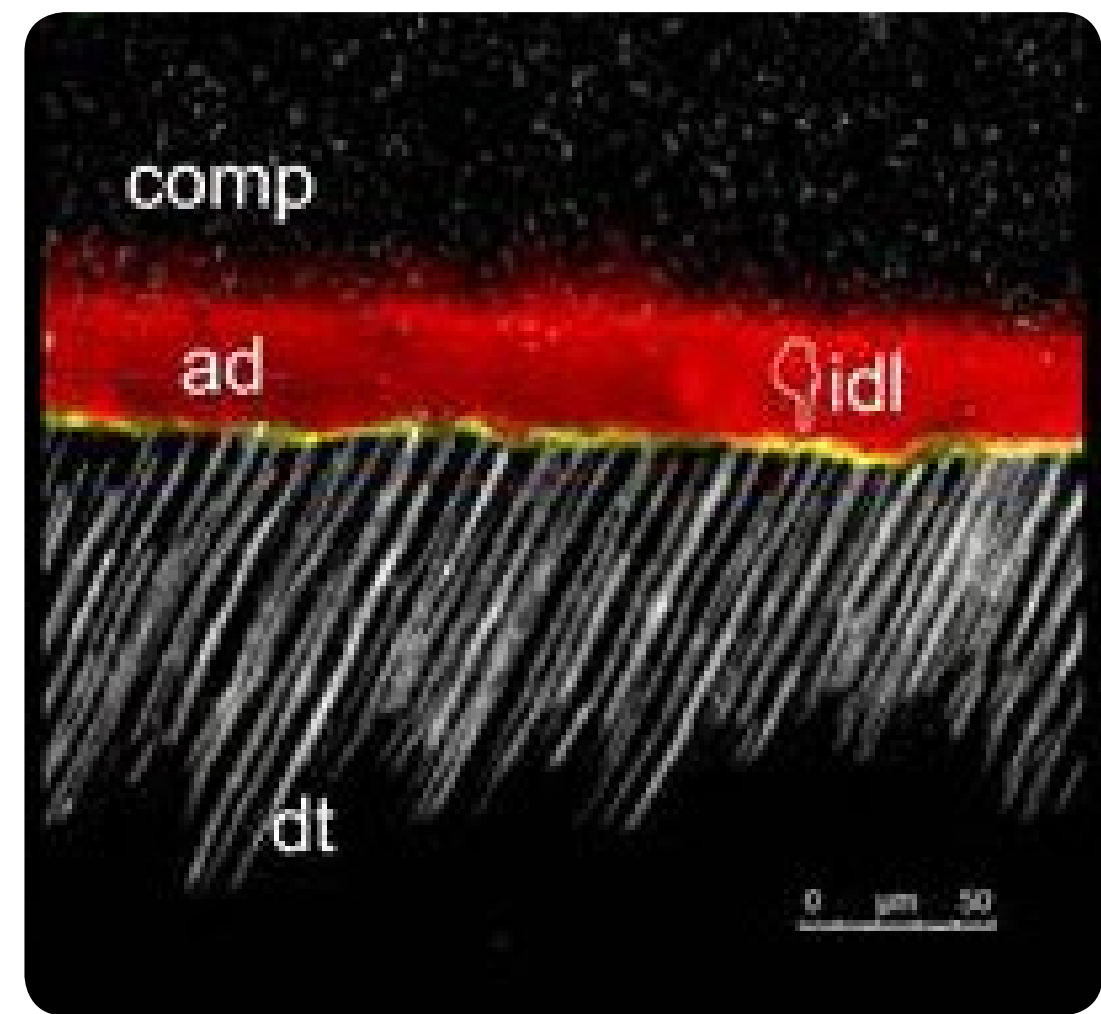
C: Dentine treated using Sylc and conditioned with a universal adhesive in self-etching mode. Note the smear layer partially covering the dentine surface. A Bioglass-rich

smear layer is still available for conversion into apatite at the resin-dentine interface. However, most of the dentinal tubules are totally occluded; the risk for post-operative sensitivity here is very low. (Confocal 3D topographic image)

D



E



D: Universal adhesive applied in self-etch mode onto a dentine surface treated with AquaCare and Sylec bioglass. Note the adhesive (ad) was able to form a sound interdiffusion layer (IDL: hybrid layer) but with very few resin tags (rt). In the confocal single-projection image (E) it is possible to observe a reflective material obliterating the dentinal tubules. It is most likely that the bioglass particles have penetrated the tubules several microns during the air-abrasion procedures.

Prof. Dr. Salvatore Sauro, Dental Biomaterials, Preventive and Minimally Invasive Dentistry, Universidad CEU-Cardenal Herrera, Valencia, Spain.

AquaCare

AquaSol

AquaSol safely and effectively delivers a sleeve of fluid surrounding the powder in use.

The advanced 'Venturi' design tip ensures mixing is external of the handpiece and blockage free.

It's patient-friendly - with a Vanilla aroma.



AquaCare

Specifications



Height: 185mm
Width: 265mm

Depth: 240mm
Weight: 3.066kg



Height: 185mm
Width: 184mm

Depth: 216mm
Weight: 1.900kg

Min. Air Supply Pressure: 5 bar / 72 psi

Max. Air Supply Pressure: 7 bar / 100psi

Output Pressure: 0-7 bar / 100psi; Infinitely variable for cutting / polishing via control knob and pressure gauge.

Handpiece Tip Sizes: 0.6 Silver / 0.8mm Gold.

Air Abrasion Media: 53 μ m (micron) Aluminium Oxide, 29 μ m Aluminium Oxide.

Air Polishing Media: 'Sylc for AquaCare', Sodium Bicarbonate.

Some of our Community



Putignano



Politano



Losada



Bazos



Roman



Nino



Gresnigt



Clavijo



Gerdolle



Banerjee



Mangani



Greenwall



Mykhaylyuk



Levine



Taha



Raharja



Aoshima



Smithson



Guerrero



Figueira



Calixto



Peumans



Barbosa



Kois

[Click or Tap here to discover more](#)

AquaCare

Contact

Medivance Instruments Ltd.,
Barretts Green Road,
London - NW10 7AP
United Kingdom

+44 (0)20 8965 2913

AquaCare@velopex.com



www.velopex.com

Connect

