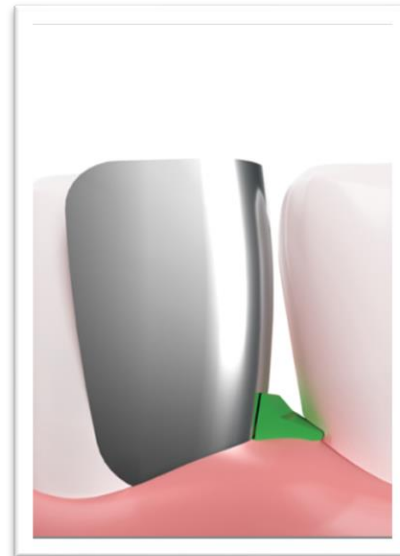


**Fusion**<sup>TM</sup>   
Anterior Matrix System

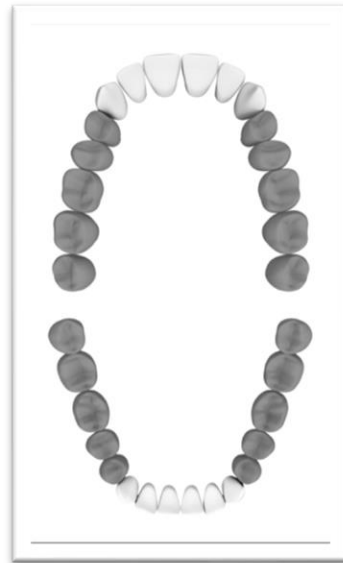
**Garrison**  
Dental Solutions

# Overview

- Introduction
- The Idea
- Product Solution
- Product Features & Benefits
- Technique
- Kits & contents
- Refills & contents



## **Fusion Anterior Matrix System – The Social Six never had it so good!**



This all-new series of matrix bands and wedges brings Garrison's 23+ years of posterior matrix expertise to help you achieve beautiful and predictable outcomes on your toughest anterior cases.

## The Idea - Bands

Our customers were the inspiration for this great new system!

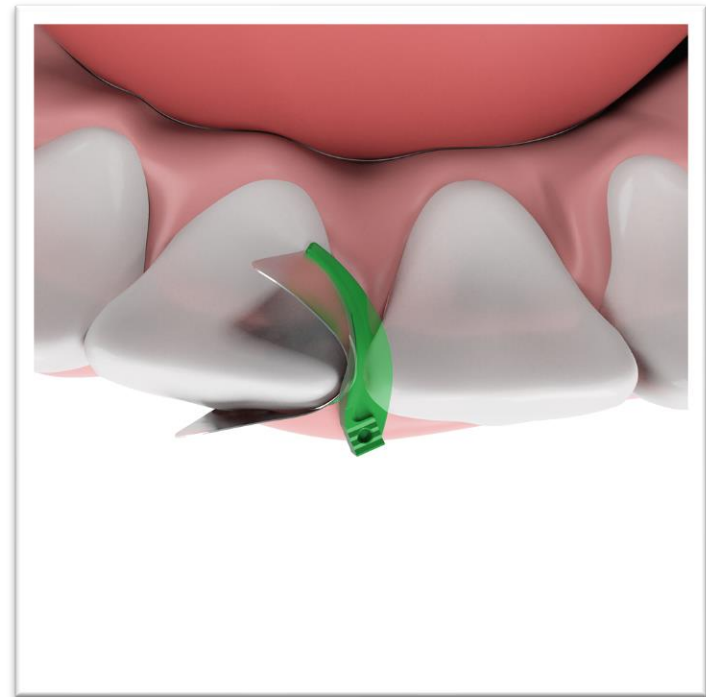
For years, our customers have shown us how they use posterior metal matrices to restore anterior teeth. When placed vertically, what was the buccal-lingual curvature of the band creates ideal gingival-incisal curvature for an anterior tooth.

We worked with these customers to design a metal matrix band that takes this technique to a whole new level of refinement.

## The Idea - Wedges

The new wedges are the perfect companion. Their unique, radical curvature hugs the band to the tooth and anchors it in place – helping to free up your hands.

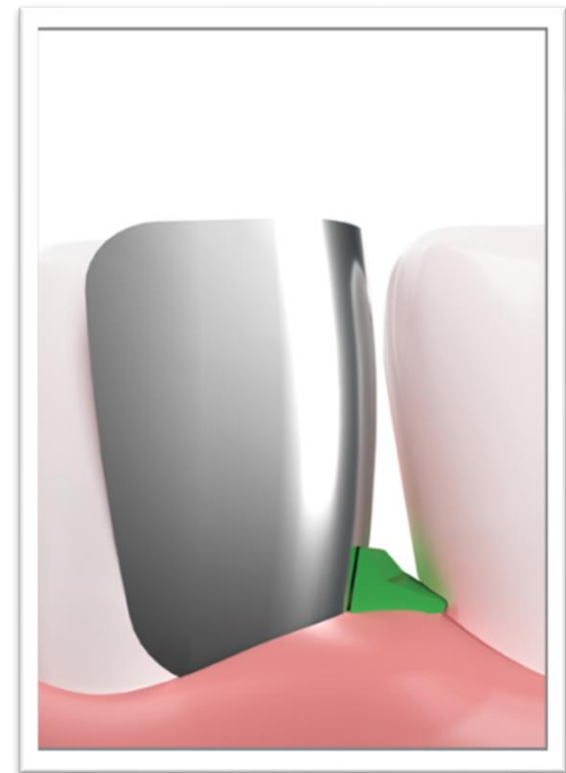
They gently slide alongside the interdental papilla to sit lower interproximally providing maximum tooth separation while helping to reduce the occurrence of black triangles.



## Fusion Anterior Matrix System

The Fusion Anterior Matrix System from Garrison gives you the materials and techniques to restore many types of anterior lesions with confidence.

Composite placement and sculpting are simplified, allowing you to easily express your artistic nature restoring beautiful smiles for your patients.



## Fusion Anterior Matrix

- Only 0.38mm – significantly thinner than strips to facilitate better interproximal contact.
- Firm stainless steel resists deformation both during placement and while compressing composite into the preparation.
- Easy to slide into the sulcus for deeper restorations.
- Ideal anatomic curvature in the gingival-incisal direction AND facial-lingual.
- Far superior to strips when restoring large or deep carious lesions.



Tall



Short

## Fusion Anterior Wedge

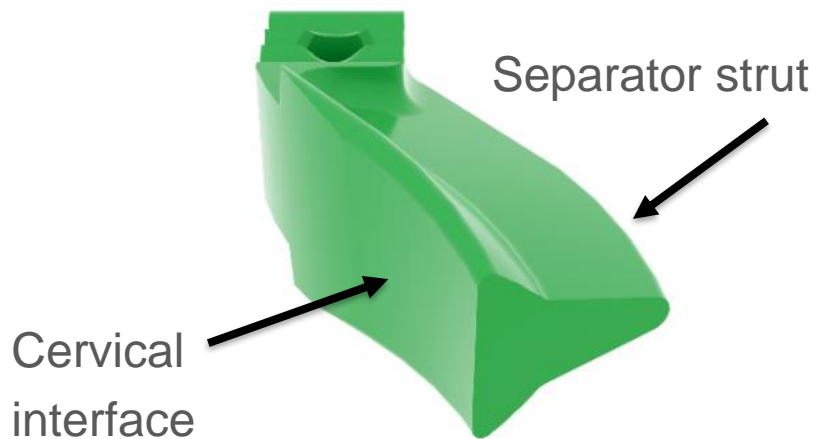
- Radical curvature ensures a firm seal at the cervical margin from facial to lingual.
- Helps maintain ideal anatomy by hugging the band to the tooth.
- Unique ‘T’ shape sits deeper in the interproximal space to minimize the dreaded ‘black triangle.’
- Tapered separator strut allows you to adjust the amount of pressure exerted to control the interproximal contact.
- The cervical interface is half above and half below the sulcus for maximum adaptation with deeper restorations.



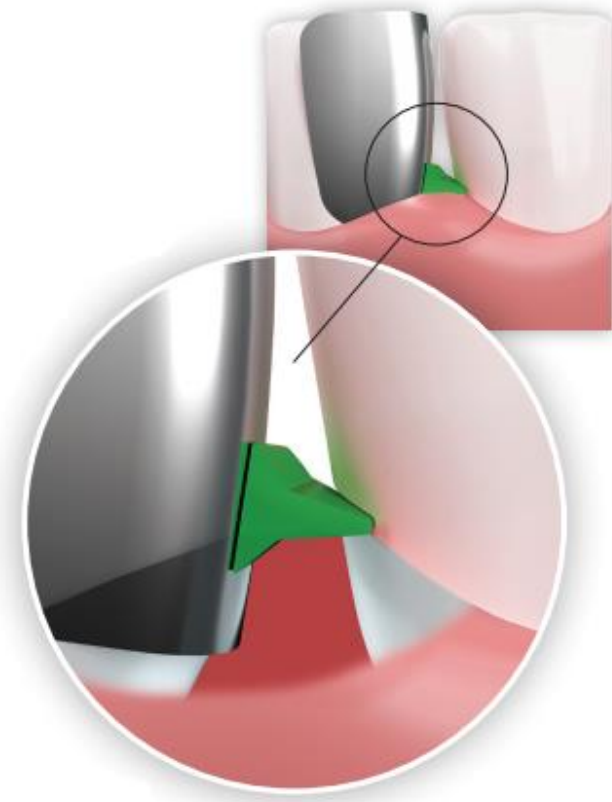


# Product Features & Benefits

Unique 'T' shape and Tapered separator strut



View below the sulcus - for maximum adaptation with deeper restorations



## Technique

**1. Select a matrix band** that most closely approximates the height of the tooth to be restored. As it is often desirable to insert the band slightly into the sulcus, be sure to account for this when selecting the matrix.

**2. The tapered matrix** may be inserted with the widest end towards the largest area to be restored. For instance, it may be advantageous to have the wider portion of the matrix towards the incisal edge when restoring a Class IV with significant incisal involvement. Conversely, placing the matrix with the widest end towards the gingiva when restoring a large Class III would be recommended.

**3. Hold the matrix firmly in place during wedging.** A finger placed on the incisal edge of the band with apical pressure will help prevent the band from becoming dislodged when inserting the wedge.

## Technique

- 4. The Fusion Anterior Wedge may be placed either from the facial or lingual.** It is recommended that it be placed from the side that will best support the matrix band for the type of lesion being restored.
- 5. The wedge should be placed** with the cervical interface towards the matrix band so that the curve of the wedge follows the matrix around the tooth. This will ensure maximum matrix adaptation.
- 6. Use the smallest wedge that provides adequate tooth separation** to ensure proper interproximal contact. ‘Over-wedging’ with a wedge that is larger than needed will increase the likelihood of creating a black triangle.

*Sterilization prior to use is recommended.*

## Kits

### 1. ANK01

- 50 short bands
- 50 tall bands
- 25 extra small wedges
- 25 small wedges
- 25 medium wedges
- 25 large wedges

### 2. ANK02

- 25 short bands
- 25 tall bands
- 10 extra small wedges
- 10 small wedges
- 10 medium wedges
- 10 large wedges



Thank you.

**Garrison**<sup>®</sup>  
Dental Solutions

150 DeWitt Lane  
Spring Lake, MI 49456

Phone 616.842.2244  
Fax 616.842.2430  
Toll-free 888.437.0032  
Email [gds@garrisondental.com](mailto:gds@garrisondental.com)

**[www.garrisondental.com](http://www.garrisondental.com)**

**Europe Office**  
Garrison Dental Solutions  
Carlstr. 50  
52531 Uebach-Palenberg  
Germany  
Phone: +49(0)2451971409  
Fax: +49(0)2451971410  
Email: [info@garrisondental.net](mailto:info@garrisondental.net)